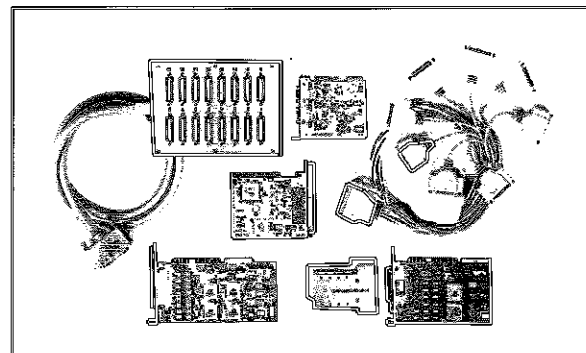


CHASE MULTI-PORT SERIAL I/O CARDS

Key Features & Benefits

- **460.8 kbps multi-port serial solutions** provide unparalleled performance to reduce connection and download times
- **Support for RAS under Windows NT®** makes setup fast and information sharing easy on MS® networks
- **Multi-strike surge protection** ensures reliability
- **State of the art on-chip flow control and 64 byte buffers** reduce system overhead
- **PCI and ISA (AT) 2, 4, 8 & 16 port versions** provide flexibility to suit specific needs
- **Free firmware upgrades and Lifetime Warranty** ensures future proof solutions with peace of mind



IOXTRA, AT-FAST, PCI-FAST

IOXTRA, AT-FAST, PCI-FAST Product Overview

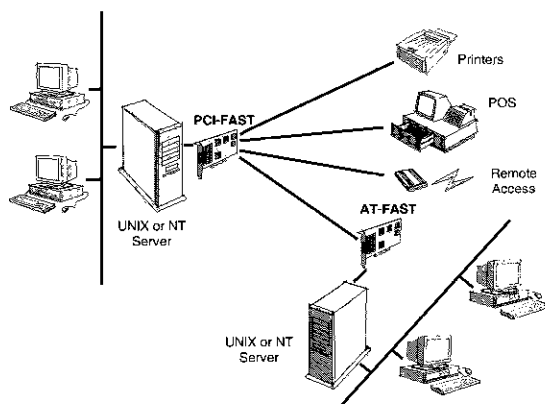
The Chase AT-FAST, PCI-FAST and IOXTRA multi-port serial cards offer unparalleled features, speed and reliability. With support for Citrix WinFrame, Windows® 95, UNIX and RAS (Remote Access Server) under Windows NT®, these powerful I/O cards provide cost effective solutions for a variety of applications.

With the advent of today's high performance CPUs and RISC-based technology, the need for additional I/O processing has diminished. Using the latest 16C654 UARTs with 64 byte FIFO (buffering), Chase multi-port solutions handle the hardware and software flow control, giving unrivalled performance for a fraction of the cost of more intelligent solutions.

Supported Systems

- Microsoft®:** Windows NT®, Citrix WinFRAME, Windows® for Workgroups, Windows® 95, Windows® 3.x
- UNIX:** SCO OpenServer, UnixWare (AT-FAST/PCI-FAST)

Product Applications



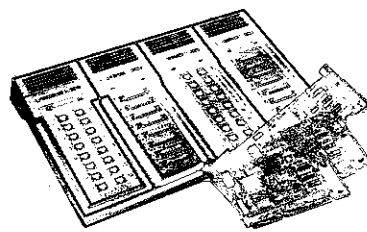
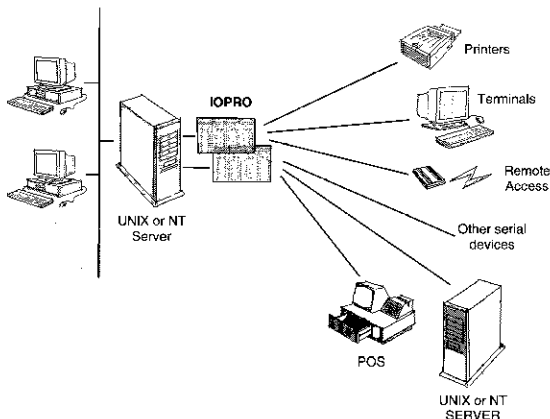
Technical Specification

	IOXTRA	AT-FAST/PCI-FAST
Ports:	2 x DB9	4 x RJ45 on back-plane 8 x RJ45 distribution box 8 x DB25 octopus cable 16 x DB25 distribution box
UARTs:	16C650	16C654
Buffering:	32 byte	64 byte
Bus support:	ISA	ISA/EISA/PCI
Modems:	Full modem control (4 & 8 port only)	
Flow control:	Hardware and software flow control	
Baud rates:	Up to 460.8 kbps asynchronous	
Signal support:	FG, SG, TXD, RXD, RTS, CTS, DTR (all) DCD, DSR (not 16 port)	
Dimensions:		
IOXTRA, PCI-FAST4:		1/2 length card
AT-FAST4, AT/PCI-FAST8:		3/4 length card
AT/PCI-FAST16:		Full length card

Key Features & Benefits

- **Intelligent modular solutions** provide simple expandability for Windows NT® and UNIX systems
- **Up to 64 ports from a single slot and 256 ports from a single host** gives cost effective and powerful expandability
- **On-board dedicated processors** increase power as new ports are added ensuring no degradation in performance
- **Transfer rates up to 115.2 kbps** give maximum throughput for modems, terminals, printers and other serial devices
- **ISA (AT) & EISA 8 and 16 port versions** provide flexibility to suit specific needs
- **Free firmware upgrades and Lifetime Warranty** ensure future proof solutions with peace of mind

Product Applications



IOPRO

IOPRO Product Overview

Designed around the combined concepts of providing a simple, cost effective upgrade path for expandability and high-performance, the Chase IOPRO is a powerful intelligent solution for mission critical, high throughput applications.

IOPRO utilises a powerful, yet simple, modular system of 8 and 16 port ICUs (Intelligent Communication Units) with RISC-based UARTs. The ICU's clip together to create an ideal mix of serial ports. With each ICU containing it's own dedicated processor, there is no degradation in performance as the system expands.

With support for both Windows NT® and UNIX applications, IOPRO offers flexibility, reliability and peace of mind. Expandable up to 64 ports per PC bus slot, and up to 256 ports per system, IOPRO can be installed today with the knowledge that future upgrades can be easily, and cost effectively, implemented.

Supported Systems

Microsoft®: Windows NT®

UNIX: SCO OpenServer, UnixWare, XENIX; Interactive; Olivetti SVR4

Technical Specification

ICUs per host card: Up to 4 (max. 64 ports)

Host cards per system: Up to 4 (max. 256 ports)

Ports: 8 port DB25 ICU
16 port RJ45 ICU

Buses supported: ISA, EISA

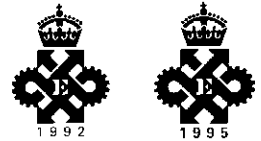
Baud rates: Up to 115.2 kbps asynchronous

Serial signal support: TX, RX, RTS, CTS, FG, DSR, DTR, DCD, SG

Power requirement: 10 watts per ICU (An additional power supply is required when four ICU's are connected).

ICU Dimensions: Length: 305 mm
Width: 120 mm
Height: 50 mm
Weight: 900 kg

Chase Research PLC
7 Cedarwood
Chineham Business Park
Basingstoke
Hampshire, RG24 8WD
United Kingdom
Tel: +44 (0)1256 352260
Fax: +44 (0)1256 810159
info@chaser.co.uk
http://www.chaser.co.uk



Chase Research GmbH
Zettachring 6
D-70567 Stuttgart
Germany
Tel: +49 (0)711 7287 155
Fax: +49 (0)711 7287 156
info@chaser.de

Chase Research Inc.
545 Marriott Drive
Suite 100
Nashville, TN 37214
United States
Tel: +1 615 872 0770
Fax: +1 615 872 0771
info@chaser.com
http://www.chaser.com

Chase Research Asia
171 Chin Swee Road
03-05 / 06 San Centre
Singapore 169877
Tel: +65 536 3630
Fax: +65 536 3631
infoasia@chaser.co.uk

